



Powerline Press

NEWSLETTER

A Supplement of Oklahoma Living Published by Lake Region Electric Cooperative for its members.

November 2018

Vol. 9

No. 11



Energy Efficiency
Tip of the Month

Got holiday leftovers? When possible, use the microwave to reheat food. Microwaves use as much as 80 percent less energy than a standard oven.

Source: energy.gov



LREC offices will be closed, November 22 & 23 in observance of the Thanksgiving Holiday.

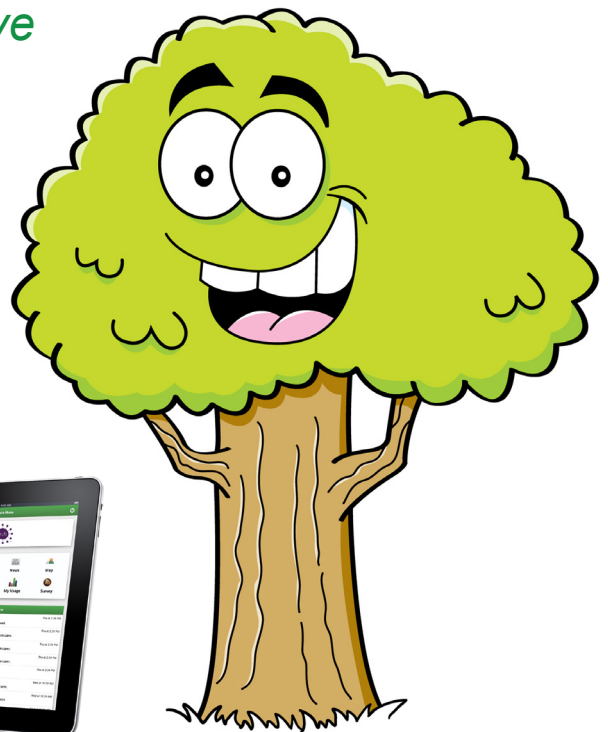
Go Paperless and receive a \$5 credit on your next electric or telecom bill

Save Time; Save Money; Save Postage; Save a Tree!

Sign on to LREC's online SmartHub App, click on Settings, then click Go Paperless to receive a \$5 bill credit on your next electric bill. When you sign up for paperless billing during the month of November, LREC will give you a \$5 bill credit on your next bill. We will deliver your monthly statement (and access to the digital newsletters) electronically even before paper bills and newsletter editions arrive in your mailbox.

With SmartHub, you can:

- make a payment on you electric or fiber
- check your electric usage (we encourage members to monitor)
- notify customer service of account issues
- communicate directly with the cooperative
- report an electrical outage (unable to report fiber outage at this time via the app)
- read current and past editions of this newsletter



apps and a web version to give members secure access whether at home, at work, or on the go. Members with smartphones or tablet devices can download the SmartHub app from iTunes or the Android Marketplace. (Use the search term "SmartHub")

Once enrolled in paperless billing, you'll be notified by email every month when your bill is ready to view. Access to previous statements and historical usage has never been more comfortable or more secure. From the Smarthub App and LREC's website: www.lrecok.coop; at the top of homepage (Click "Pay Electric, Pay Telecom, or Pay Water"). SmartHub is available in both mobile

For more information about LREC's "Paperless Billing Promotion" or our SmartHub App, contact LREC's billing department at **918-772-2526** or **800-364-5732**

RETHINK THE HOME PHONE



Keep your same phone number

Create the perfect package when you add home phone to your Lake Region fiber account.

FREE Premium Phone Features:
Voicemail | Caller ID | Call Waiting | Three-way calling.



918-772-2526 | www.lrecok.net

Bundle Discounts Offered:

» **DOUBLE PLAY** - Pick any two services take \$15 off your monthly bill.

» **TRIPLE PLAY** - Pick all three services take \$20 off your monthly bill.

Residential Line with unlimited long-distance.....\$39.95/mo

Lake Region, not only, offers safe affordable electric and one of fastest internet service in the area (speeds up to 100 Mbps), but we also provide reliable home phone and TV service. Visit our website www.lrecok.net or give us a call today at **918-772-2526** to add the home phone or TV service to your fiber account. Our friendly local team is standing by ready to get you connected. ****Fiber services are only available where we have built our fiber-to-the-home network.***

» **Quality** - cell phone service can be spotty and can go out from time to time in the rural areas. Phone

service from Lake Region is powered by the same member focused employees of Lake Region Electric Cooperative.

» **Emergencies** - phone service from Lake Region is \$39.95 + tax per month and includes unlimited local and long-distance calling. You will be able to leave the house without worries - the kids, babysitters, and grandparents or great-grandparents will always have a way to connect with you.

Fiber Construction Build Out, How it Works

Still unable to connect to our fiber-to-the-home (FTTH) network? We are still expanding service zones. Be sure you are signed up and registered at register.lrecok.net. We are, strategically searching for zones to expand our fiber network to the next zone.

We use the information collected from our pre-registration website to aid us in determining where these places may be. By registering your address, you are

expressing your interest in having Lake Region FTTH services. It's really that simple!

Once enough interest has been expressed in a specific area, we will consider expanding our service network there, if feasible. There are a large number of resources, funding, and labor required to bring a fiber-optic network to a zone. The more supporters in your zone, the more likely we are to bring fiber to your home. All of this construction process will take years to complete. Once again your cooperative is stepping up to the plate and doing what other companies won't build for rural communities. View our prices and services offered online at www.lrecok.net.

Students Visit LREC



Tahlequah senior students recently toured LREC's headquarters in Hulbert to learn more about what a cooperative is and what the different departments do to keep the electric and fiber optic services up and running.

"This event was intended to educate the younger generation about the cooperative business model and inspire students to consider the variety of career opportunities an electric co-op has to offer," said Glen Clark, Marketing Director.

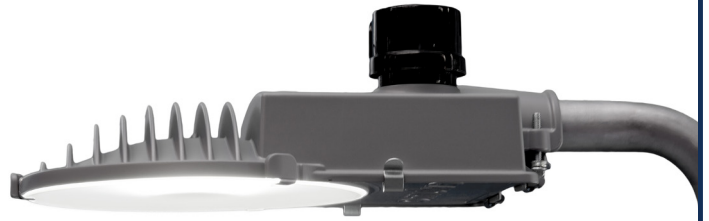
DAYLIGHT SAVING TIME

Don't forget to fall back
on **November 4!**

Set your clocks back
by one hour.



LREC SECURITY LIGHTING



You can protect your home or business and make it more attractive with our security lighting service from LREC. Our security lighting fixtures operate automatically from dusk to dawn to help prevent vandalism, burglaries and other crimes, even while you're away.

Great Peace of Mind

Security lights are one of the safest, smartest, most convenient and most affordable forms of home and property protection available. They also make play areas safer for children and let you stay outside longer to enjoy outdoor activities, giving you and your family greater peace of mind.

Protect your Home and Your Family

We offer the latest LED technology in outdoor lighting. If you're looking for an easy and inexpensive way to protect your home, security lighting can do just that.

For a small monthly fee, a residential 7,000 lumens light cost \$9.80/mo.

LREC is currently only installing LED security lights on new services requesting a security light. There is a \$100 upgrade fee to have an already existing, working security light changed out with a new LED light.

The use of LED security lights is saving the co-op money on maintenance and, in return, saving you, the members of the co-op money in the future.

Sign up today for a security light by completing our online form at www.lrecok.coop/security-lights or by calling our office at **918-772-2526**.

Illuminate Your Holiday Season with Safety

Whether hanging holiday lights, cleaning gutters, or reaching high to attach a photo just out of arm's length, ladders are a necessity for home improvement. For projects large and small, ladders provide the extra height to complete tasks that are otherwise out of reach. However, when climbing a ladder, use caution to avoid accidents and electrical injuries.

Ladder accidents ranked among the top ten causes of injury cited by the Occupational Safety and Health Administration (OSHA). Although falls are most common, increased height can also increase the risk of electrical accidents, injuries and death. LREC urges everyone to keep themselves and equipment at least 10 feet away from overhead power lines.

» Opt for a fiberglass, rather than a wood or aluminum ladder when working near electricity. Fiberglass is not as durable and heavier than other materials, when clean and dry, fiberglass ladders are less conductive. Remember that no ladder is safe around electricity.

» Before each use, inspect the ladder, paying attention to cracks or defects. Never use a damaged ladder or one coated with dirt or grease. This can provide a path for electrical currents.

» Make sure that you are using the correct size ladder for the job, especially when completing tasks outside the home.

» Always look overhead to make sure that you will not make contact with any overhead power lines. Keep yourself, the ladder, and all tools at least 10 feet from any energized equipment.

Call Before Your Dig



THE BIG GAME IS ON

Don't cut his electric or fiber optic line!

With more and more Lake Region fiber drops going in each day, we want to remind our members to call Okie 811 before your dig. Far too many people and contractors fail to call before digging and end up causing expensive damage to the co-ops underground systems. When they do call 811, Lake Region and other utilities in the area send professional locators to the site to mark the locations of underground utilities with flags, paint or both so the homeowner or contractor can avoid 2124302 hitting them.

This service is free. The law makes it clear that anyone who doesn't do so and ends up causing damage can be held responsible for the cost of making repairs.

Board of Trustees

Scott Manes.....President
 Lynn Lamons.....Vice-President
 Randall Shankle.....Secretary-Treasurer
 Jack Teague.....Asst. Secretary-Treasurer
 James Walls Trustee
 Gary CooperTrustee
 Dianna Mayfield.....Trustee

Staff

Hamid VahdatipourCEO
 Ben McCollumDirector of Finance
 Logan Pleasant.....Director of Operations
 Glen ClarkDirector of Marketing
 Larry MattesEditor

Office Hours

Monday-Friday
 8:00 a.m. - 4:30 p.m.

Telephone

800-364-LREC or
 918-772-2526

Website:

www.lrecok.coop

Locations

Hulbert, Wagoner &
 Tahlequah, OK.

Main Office Address

P.O. Box 127
 Hulbert, OK 74441

Hidden Account Number

Look for your account number hidden in this issue of the *Powerline Press*. If you find your number, Lake Region Electric will credit your next bill.

To claim your credit, notify LREC's Hulbert office by phone or mail during the month of publication.

The amount increases by \$10 with each issue your prize goes unclaimed to a maximum of \$50.

For more information, call [800-364-LREC](tel:800-364-LREC) or [918-772-2526](tel:918-772-2526)

Cooperative bylaws are available upon request at Lake Region Electric Cooperative's office in Hulbert.